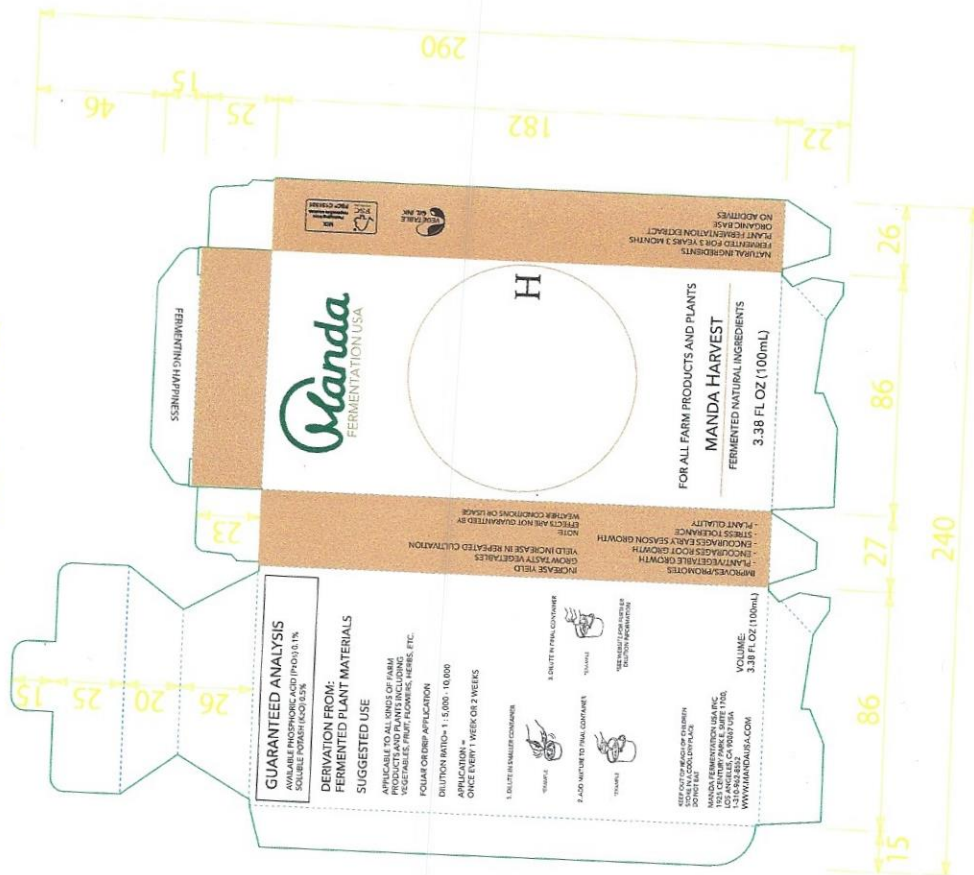
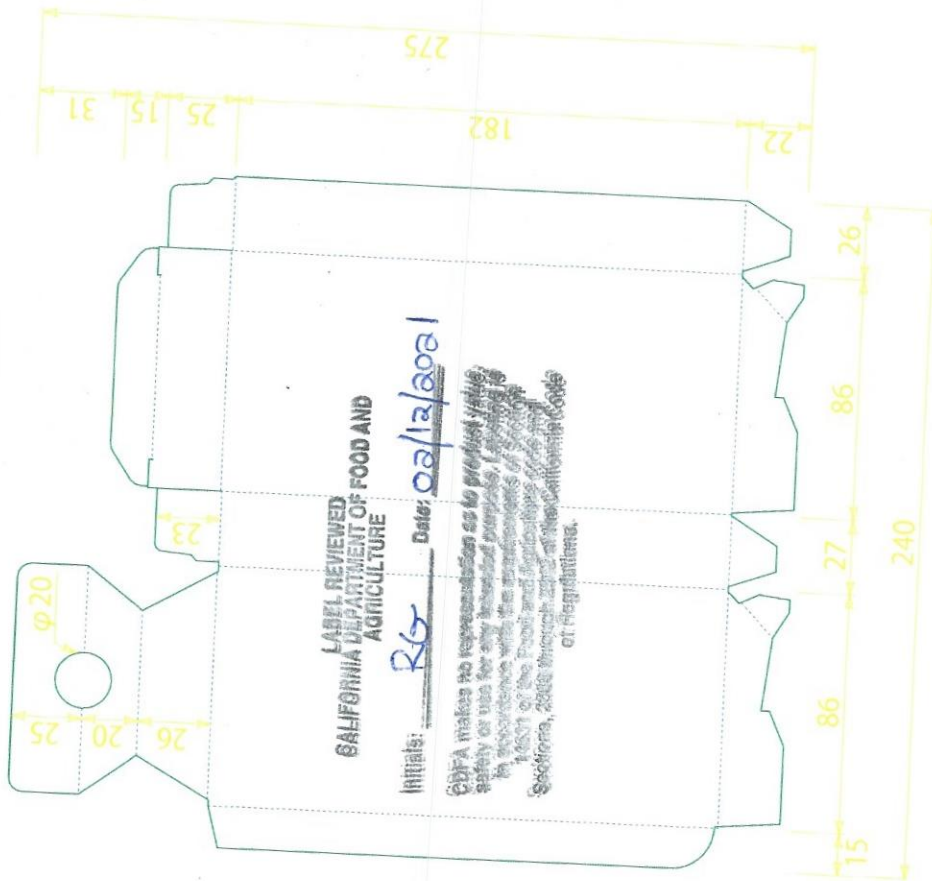


万田発酵(株)様 海外用植物用100mlケース

LOVENATURALI® # 37742#01(FS310g/ml 2019.12.3



LOVENATURALI® # 37742#01(FS310g/ml 2019.12.3



Manda Fermentation USA Inc

ID# 696945

GUARANTEED ANALYSIS

AVAILABLE PHOSPHORIC ACID (P₂O₅) 0.1%
SOLUBLE POTASH (K₂O) 0.5%

DERIVATION FROM: FERMENTED PLANT MATERIALS

SUGGESTED USE

APPLICABLE TO ALL KINDS OF FARM
PRODUCTS AND PLANTS INCLUDING
VEGETABLES, FRUIT, FLOWERS, HERBS, ETC.

FOLIAR OR DRIP APPLICATION

DILUTION RATIO = 1 : 5,000 - 10,000

APPLICATION =
ONCE EVERY 1 WEEK OR 2 WEEKS

1. DILUTE IN SMALLER CONTAINER



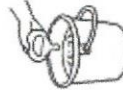
*EXAMPLE

3. DILUTE IN FINAL CONTAINER



*EXAMPLE

2. ADD MIXTURE TO FINAL CONTAINER



*EXAMPLE

*SEE WEBSITE FOR FURTHER
DILUTION INFORMATION

KEEP OUT OF REACH OF CHILDREN
STORE IN A COOL DRY PLACE
DO NOT EAT

MANDA FERMENTATION USA INC
1925 CENTURY PARK E, SUITE 1700,
LOS ANGELES, CA 90067 USA
1-310-962-8552
WWW.MANDAUSA.COM

VOLUME:
3.38 FL OZ (100mL)

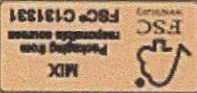


LABEL REVIEWED
CALIFORNIA DEPARTMENT OF FOOD AND
AGRICULTURE

Initials: RB Date: 02/2/2021

CDFA makes no representation as to product value,
safety or use for any intended purpose. Labeling is
in accordance with the requirements of Section
140031 of the Food and Agriculture Code and
Sections 2460 through 2472 of the California Code
of Regulations.

H



NATURAL INGREDIENTS
FERMENTED FOR 3 YEARS 3 MONTHS
PLANT FERMENTATION EXTRACT
ORGANIC BASE
NO ADDITIVES

FOR ALL FARM PRODUCTS AND PLANTS

MANDA HARVEST
FERMENTED NATURAL INGREDIENTS

3.38 FL OZ (100mL)

IMPROVES/PROMOTES
- PLANT/VEGETABLE GROWTH
- ENCOURAGES ROOT GROWTH
- ENCOURAGES EARLY SEASON GROWTH
- STRESS TOLERANCE
- PLANT QUALITY
INCREASE YIELD
GROW TASTY VEGETABLES
YIELD INCREASE IN REPEATED CULTIVATION
NOTE:
EFFECTS ARE NOT GUARANTEED BY
WEATHER CONDITIONS OR USAGE